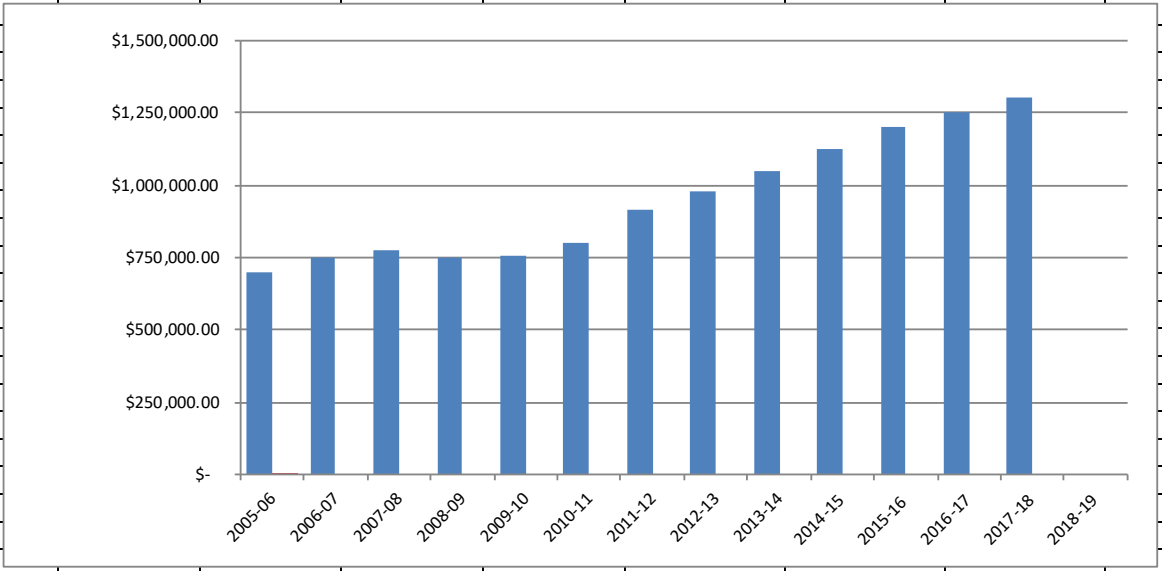


### FCTDC Collections Report Through 09/30/2018

Month	2005-06	2006-07	2007-08	2008-09	2009-10	2010-11	2011-12	2012-13	2013-14	2014-15	2015-16	2016-17
October	\$ 35,408.91	\$ 32,809.57	\$ 39,697.19	\$ 38,597.69	\$ 39,568.32	\$ 36,996.34	\$ 48,383.10	\$ 53,543.22	\$ 57,651.88	\$ 58,875.87	\$ 75,084.59	\$ 95,107.96
November	\$ 24,824.38	\$ 24,717.35	\$ 27,182.76	\$ 25,888.92	\$ 25,863.47	\$ 26,438.49	\$ 34,441.98	\$ 40,334.08	\$ 34,740.65	\$ 40,065.78	\$ 44,449.24	\$ 46,043.65
December	\$ 20,421.74	\$ 16,055.89	\$ 22,986.95	\$ 23,167.33	\$ 16,530.96	\$ 19,936.19	\$ 21,597.00	\$ 21,510.93	\$ 29,747.90	\$ 30,978.80	\$ 24,692.82	\$ 41,580.49
January	\$ 19,681.48	\$ 26,489.68	\$ 22,911.37	\$ 22,960.20	\$ 26,170.57	\$ 23,359.12	\$ 30,392.62	\$ 33,657.09	\$ 34,707.03	\$ 38,805.36	\$ 47,001.63	\$ 41,668.57
February	\$ 29,294.47	\$ 44,900.59	\$ 40,835.29	\$ 39,452.32	\$ 33,678.97	\$ 34,980.88	\$ 52,045.79	\$ 49,365.87	\$ 52,883.10	\$ 42,754.53	\$ 64,493.95	\$ 60,422.61
March	\$ 51,243.40	\$ 45,643.22	\$ 61,090.70	\$ 49,778.57	\$ 53,116.79	\$ 61,989.52	\$ 66,597.90	\$ 80,880.36	\$ 78,180.12	\$ 83,626.43	\$ 80,017.67	\$ 84,583.19
April	\$ 69,608.73	\$ 70,430.06	\$ 66,135.24	\$ 73,880.65	\$ 53,934.68	\$ 70,610.82	\$ 81,641.55	\$ 90,242.68	\$ 81,115.14	\$ 101,310.37	\$ 103,120.37	\$ 89,949.68
May	\$ 100,486.16	\$ 114,100.71	\$ 123,221.80	\$ 104,769.28	\$ 120,470.95	\$ 90,634.75	\$ 140,203.97	\$ 115,589.54	\$ 135,897.45	\$ 143,700.44	\$ 131,348.44	\$ 110,484.59
June	\$ 107,484.39	\$ 166,403.90	\$ 138,839.79	\$ 143,507.76	\$ 151,640.61	\$ 172,029.99	\$ 143,805.29	\$ 195,838.11	\$ 210,505.76	\$ 195,093.30	\$ 213,948.96	\$ 226,795.48
July	\$ 149,857.23	\$ 95,128.02	\$ 128,027.35	\$ 131,276.62	\$ 114,121.18	\$ 147,874.24	\$ 140,000.40	\$ 153,197.77	\$ 164,199.99	\$ 182,235.52	\$ 253,603.30	\$ 242,036.51
August	\$ 51,353.14	\$ 69,863.99	\$ 57,497.82	\$ 56,312.21	\$ 71,377.70	\$ 60,698.01	\$ 93,912.12	\$ 86,742.96	\$ 107,783.56	\$ 129,879.50	\$ 82,664.07	\$ 121,808.90
September	\$ 38,597.72	\$ 46,282.27	\$ 45,739.57	\$ 41,298.87	\$ 47,760.09	\$ 57,592.93	\$ 63,037.18	\$ 57,170.58	\$ 64,199.48	\$ 75,778.00	\$ 81,869.35	\$ 90,214.19
<b>Totals</b>	<b>\$ 698,261.75</b>	<b>\$ 752,825.25</b>	<b>\$ 774,165.83</b>	<b>\$ 750,890.42</b>	<b>\$ 754,234.29</b>	<b>\$ 803,141.28</b>	<b>\$ 916,058.90</b>	<b>\$ 978,073.19</b>	<b>\$ 1,051,612.06</b>	<b>\$ 1,123,103.90</b>	<b>\$ 1,202,294.39</b>	<b>\$ 1,250,695.82</b>
<b>YOY %</b>		<b>\$ 54,563.50</b>	<b>\$ 21,340.58</b>	<b>\$ (23,275.41)</b>	<b>\$ 3,343.87</b>	<b>\$ 48,906.99</b>	<b>\$ 112,917.62</b>	<b>\$ 62,014.29</b>	<b>\$ 73,538.87</b>	<b>\$ 71,491.84</b>	<b>\$ 79,190.49</b>	<b>\$ 48,401.43</b>
		<b>7.8%</b>	<b>2.8%</b>	<b>-3.0%</b>	<b>0.4%</b>	<b>6.5%</b>	<b>14.1%</b>	<b>6.8%</b>	<b>7.5%</b>	<b>6.8%</b>	<b>7.1%</b>	<b>4.0%</b>

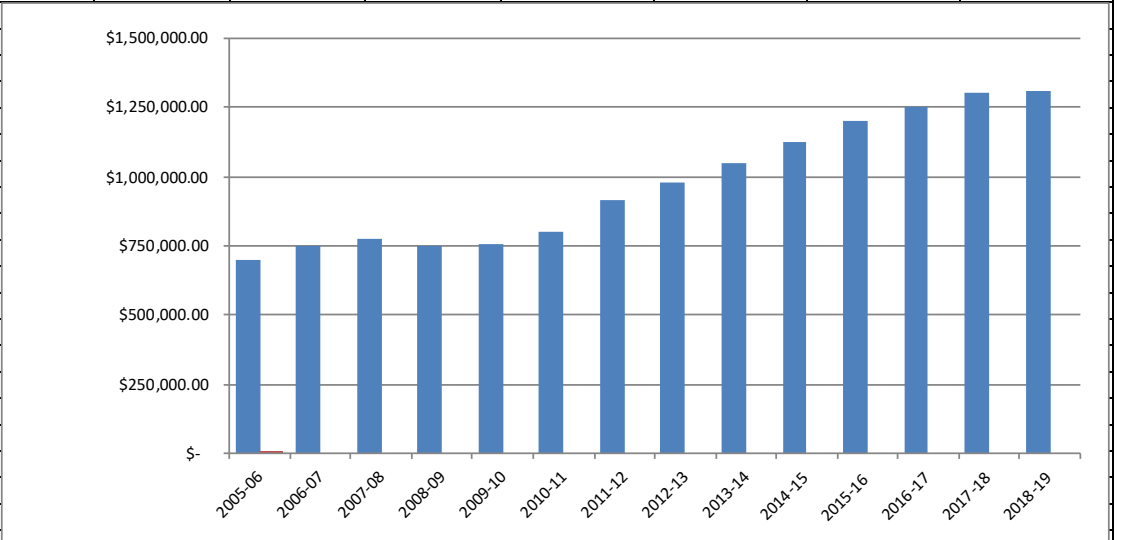
Month	2017-18	Diff	YTD Change %
October	\$ 85,823.35	\$ (9,284.61)	-9.8%
November	\$ 49,440.74	\$ 3,397.09	7.4%
December	\$ 37,182.43	\$ (4,398.06)	-10.6%
January	\$ 51,388.51	\$ 9,719.94	23.3%
February	\$ 58,337.94	\$ (2,084.67)	-3.5%
March	\$ 111,947.32	\$ 27,364.13	32.4%
April	\$ 103,422.44	\$ 13,472.76	15.0%
May	\$ 140,130.14	\$ 29,645.55	26.8%
June	\$ 269,049.32	\$ 42,253.84	18.6%
July	\$ 215,933.34	\$ (26,103.17)	-10.8%
August	\$ 111,322.92	\$ (10,485.98)	-8.6%
September	\$ 70,419.47	\$ (19,794.72)	-21.9%
<b>Totals</b>	<b>\$ 1,304,397.92</b>	<b>\$ 53,702.10</b>	<b>4.3%</b>
<b>YOY %</b>	<b>\$ 53,702.10</b>		
	<b>4.3%</b>		



**FCTDC Collections Report for  
2018-2019 Year End Report  
(Through 09/30/19)**

Month	2005-06	2006-07	2007-08	2008-09	2009-10	2010-11	2011-12	2012-13	2013-14	2014-15	2015-16	2016-17
October	\$ 35,408.91	\$ 32,809.57	\$ 39,697.19	\$ 38,597.69	\$ 39,568.32	\$ 36,996.34	\$ 48,383.10	\$ 53,543.22	\$ 57,651.88	\$ 58,875.87	\$ 75,084.59	\$ 95,107.96
November	\$ 24,824.38	\$ 24,717.35	\$ 27,182.76	\$ 25,888.92	\$ 25,863.47	\$ 26,438.49	\$ 34,441.98	\$ 40,334.08	\$ 34,740.65	\$ 40,065.78	\$ 44,449.24	\$ 46,043.65
December	\$ 20,421.74	\$ 16,055.89	\$ 22,986.95	\$ 23,167.33	\$ 16,530.96	\$ 19,936.19	\$ 21,597.00	\$ 21,510.93	\$ 29,747.90	\$ 30,978.80	\$ 24,692.82	\$ 41,580.49
January	\$ 19,681.48	\$ 26,489.68	\$ 22,911.37	\$ 22,960.20	\$ 26,170.57	\$ 23,359.12	\$ 30,392.62	\$ 33,657.09	\$ 34,707.03	\$ 38,805.36	\$ 47,001.63	\$ 41,668.57
February	\$ 29,294.47	\$ 44,900.59	\$ 40,835.29	\$ 39,452.32	\$ 33,678.97	\$ 34,980.88	\$ 52,045.79	\$ 49,365.87	\$ 52,883.10	\$ 42,754.53	\$ 64,493.95	\$ 60,422.61
March	\$ 51,243.40	\$ 45,643.22	\$ 61,090.70	\$ 49,778.57	\$ 53,116.79	\$ 61,989.52	\$ 66,597.90	\$ 80,880.36	\$ 78,180.12	\$ 83,626.43	\$ 80,017.67	\$ 84,583.19
April	\$ 69,608.73	\$ 70,430.06	\$ 66,135.24	\$ 73,880.65	\$ 53,934.68	\$ 70,610.82	\$ 81,641.55	\$ 90,242.68	\$ 81,115.14	\$ 101,310.37	\$ 103,120.37	\$ 89,949.68
May	\$ 100,486.16	\$ 114,100.71	\$ 123,221.80	\$ 104,769.28	\$ 120,470.95	\$ 90,634.75	\$ 140,203.97	\$ 115,589.54	\$ 135,897.45	\$ 143,700.44	\$ 131,348.44	\$ 110,484.59
June	\$ 107,484.39	\$ 166,403.90	\$ 138,839.79	\$ 143,507.76	\$ 151,640.61	\$ 172,029.99	\$ 143,805.29	\$ 195,838.11	\$ 210,505.76	\$ 195,093.30	\$ 213,948.96	\$ 226,795.48
July	\$ 149,857.23	\$ 95,128.02	\$ 128,027.35	\$ 131,276.62	\$ 114,121.18	\$ 147,874.24	\$ 140,000.40	\$ 153,197.77	\$ 164,199.99	\$ 182,235.52	\$ 253,603.30	\$ 242,036.51
August	\$ 51,353.14	\$ 69,863.99	\$ 57,497.82	\$ 56,312.21	\$ 71,377.70	\$ 60,698.01	\$ 93,912.12	\$ 86,742.96	\$ 107,783.56	\$ 129,879.50	\$ 82,664.07	\$ 121,808.90
September	\$ 38,597.72	\$ 46,282.27	\$ 45,739.57	\$ 41,298.87	\$ 47,760.09	\$ 57,592.93	\$ 63,037.18	\$ 57,170.58	\$ 64,199.48	\$ 75,778.00	\$ 81,869.35	\$ 90,214.19
<b>Totals</b>	<b>\$ 698,261.75</b>	<b>\$ 752,825.25</b>	<b>\$ 774,165.83</b>	<b>\$ 750,890.42</b>	<b>\$ 754,234.29</b>	<b>\$ 803,141.28</b>	<b>\$ 916,058.90</b>	<b>\$ 978,073.19</b>	<b>\$ 1,051,612.06</b>	<b>\$ 1,123,103.90</b>	<b>\$ 1,202,294.39</b>	<b>\$ 1,250,695.82</b>
<b>YOY %</b>		<b>\$ 54,563.50</b>	<b>\$ 21,340.58</b>	<b>\$ (23,275.41)</b>	<b>\$ 3,343.87</b>	<b>\$ 48,906.99</b>	<b>\$ 112,917.62</b>	<b>\$ 62,014.29</b>	<b>\$ 73,538.87</b>	<b>\$ 71,491.84</b>	<b>\$ 79,190.49</b>	<b>\$ 48,401.43</b>
		<b>7.8%</b>	<b>2.8%</b>	<b>-3.0%</b>	<b>0.4%</b>	<b>6.5%</b>	<b>14.1%</b>	<b>6.8%</b>	<b>7.5%</b>	<b>6.8%</b>	<b>7.1%</b>	<b>4.0%</b>

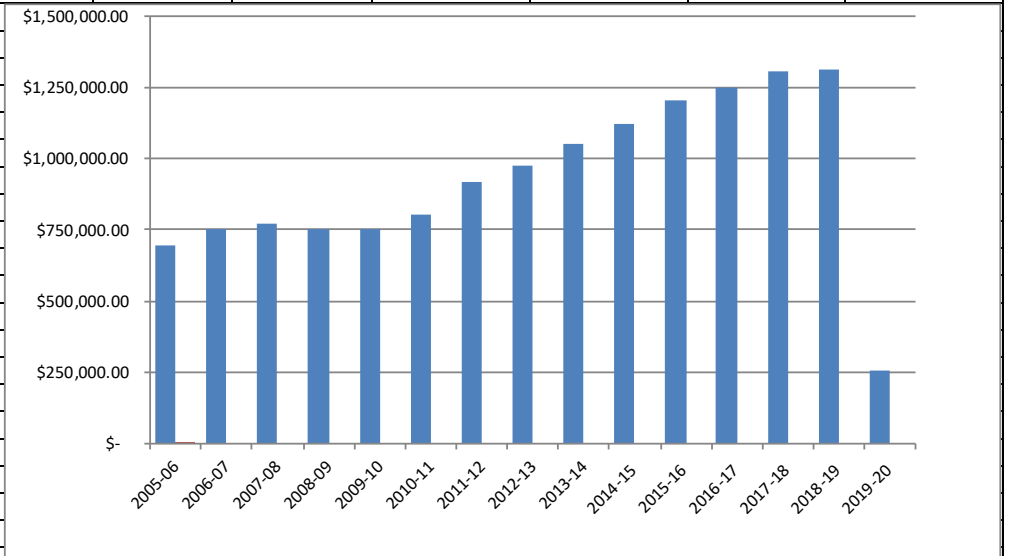
Month	2017-18	2018-19	Increase/Decrease	% of Change
October	\$ 85,823.35	\$ 38,416.89	\$ (47,406.46)	-55.24
November	\$ 49,440.74	\$ 87,784.31	\$ 38,343.57	77.55
December	\$ 37,182.43	\$ 46,715.00	\$ 9,532.57	25.64
January	\$ 51,388.51	\$ 52,063.46	\$ 674.95	1.31
February	\$ 58,337.94	\$ 66,632.44	\$ 8,294.50	14.22
March	\$ 111,947.32	\$ 127,975.20	\$ 16,027.88	14.32
April	\$ 103,422.44	\$ 82,258.08	\$ (21,164.36)	-20.46
May	\$ 140,130.14	\$ 166,129.65	\$ 25,999.51	18.55
June	\$ 269,049.32	\$ 300,092.38	\$ 31,043.06	11.54
July	\$ 215,933.34	\$ 209,374.07	\$ (6,559.27)	-3.04
August	\$ 111,322.92	\$ 134,238.67	\$ 22,915.75	20.58
September	\$ 70,419.47	\$ 90,051.57	\$ 19,632.10	27.88
<b>Totals</b>	<b>\$ 1,304,397.92</b>	<b>\$ 1,401,731.72</b>	<b>\$ 97,333.80</b>	<b>7.46</b>
<b>YOY %</b>	<b>\$ 53,702.10</b>	<b>\$ 97,333.80</b>		
	<b>4.3%</b>	<b>7.5%</b>		



**FCTDC Collections Report for  
2019-20 Year-to-Date Report  
Through July 2020**

Month	2005-06	2006-07	2007-08	2008-09	2009-10	2010-11	2011-12	2012-13	2013-14	2014-15	2015-16	2016-17
October	\$ 35,408.91	\$ 32,809.57	\$ 39,697.19	\$ 38,597.69	\$ 39,568.32	\$ 36,996.34	\$ 48,383.10	\$ 53,543.22	\$ 57,651.88	\$ 58,875.87	\$ 75,084.59	\$ 95,107.96
November	\$ 24,824.38	\$ 24,717.35	\$ 27,182.76	\$ 25,888.92	\$ 25,863.47	\$ 26,438.49	\$ 34,441.98	\$ 40,334.08	\$ 34,740.65	\$ 40,065.78	\$ 44,449.24	\$ 46,043.65
December	\$ 20,421.74	\$ 16,055.89	\$ 22,986.95	\$ 23,167.33	\$ 16,530.96	\$ 19,936.19	\$ 21,597.00	\$ 21,510.93	\$ 29,747.90	\$ 30,978.80	\$ 24,692.82	\$ 41,580.49
January	\$ 19,681.48	\$ 26,489.68	\$ 22,911.37	\$ 22,960.20	\$ 26,170.57	\$ 23,359.12	\$ 30,392.62	\$ 33,657.09	\$ 34,707.03	\$ 38,805.36	\$ 47,001.63	\$ 41,668.57
February	\$ 29,294.47	\$ 44,900.59	\$ 40,835.29	\$ 39,452.32	\$ 33,678.97	\$ 34,980.88	\$ 52,045.79	\$ 49,365.87	\$ 52,883.10	\$ 42,754.53	\$ 64,493.95	\$ 60,422.61
March	\$ 51,243.40	\$ 45,643.22	\$ 61,090.70	\$ 49,778.57	\$ 53,116.79	\$ 61,989.52	\$ 66,597.90	\$ 80,880.36	\$ 78,180.12	\$ 83,626.43	\$ 80,017.67	\$ 84,583.19
April	\$ 69,608.73	\$ 70,430.06	\$ 66,135.24	\$ 73,880.65	\$ 53,934.68	\$ 70,610.82	\$ 81,641.55	\$ 90,242.68	\$ 81,115.14	\$ 101,310.37	\$ 103,120.37	\$ 89,949.68
May	\$ 100,486.16	\$ 114,100.71	\$ 123,221.80	\$ 104,769.28	\$ 120,470.95	\$ 90,634.75	\$ 140,203.97	\$ 115,589.54	\$ 135,897.45	\$ 143,700.44	\$ 131,348.44	\$ 110,484.59
June	\$ 107,484.39	\$ 166,403.90	\$ 138,839.79	\$ 143,507.76	\$ 151,640.61	\$ 172,029.99	\$ 143,805.29	\$ 195,838.11	\$ 210,505.76	\$ 195,093.30	\$ 213,948.96	\$ 226,795.48
July	\$ 149,857.23	\$ 95,128.02	\$ 128,027.35	\$ 131,276.62	\$ 114,121.18	\$ 147,874.24	\$ 140,000.40	\$ 153,197.77	\$ 164,199.99	\$ 182,235.52	\$ 253,603.30	\$ 242,036.51
August	\$ 51,353.14	\$ 69,863.99	\$ 57,497.82	\$ 56,312.21	\$ 71,377.70	\$ 60,698.01	\$ 93,912.12	\$ 86,742.96	\$ 107,783.56	\$ 129,879.50	\$ 82,664.07	\$ 121,808.90
September	\$ 38,597.72	\$ 46,282.27	\$ 45,739.57	\$ 41,298.87	\$ 47,760.09	\$ 57,592.93	\$ 63,037.18	\$ 57,170.58	\$ 64,199.48	\$ 75,778.00	\$ 81,869.35	\$ 90,214.19
<b>Totals</b>	<b>\$ 698,261.75</b>	<b>\$ 752,825.25</b>	<b>\$ 774,165.83</b>	<b>\$ 750,890.42</b>	<b>\$ 754,234.29</b>	<b>\$ 803,141.28</b>	<b>\$ 916,058.90</b>	<b>\$ 978,073.19</b>	<b>\$ 1,051,612.06</b>	<b>\$ 1,123,103.90</b>	<b>\$ 1,202,294.39</b>	<b>\$ 1,250,695.82</b>
<b>YOY %</b>		<b>\$ 54,563.50</b>	<b>\$ 21,340.58</b>	<b>\$ (23,275.41)</b>	<b>\$ 3,343.87</b>	<b>\$ 48,906.99</b>	<b>\$ 112,917.62</b>	<b>\$ 62,014.29</b>	<b>\$ 73,538.87</b>	<b>\$ 71,491.84</b>	<b>\$ 79,190.49</b>	<b>\$ 48,401.43</b>
		<b>7.8%</b>	<b>2.8%</b>	<b>-3.0%</b>	<b>0.4%</b>	<b>6.5%</b>	<b>14.1%</b>	<b>6.8%</b>	<b>7.5%</b>	<b>6.8%</b>	<b>7.1%</b>	<b>4.0%</b>

Month	2017-18	2018-19	2019-20	Increase/Decrease	% of Change
October	\$ 85,823.35	\$ 38,416.89	\$ 89,660.28	\$ 51,243.39	133%
November	\$ 49,440.74	\$ 87,784.31	\$ 57,067.01	\$ (30,717.30)	-35%
December	\$ 37,182.43	\$ 46,715.00	\$ 52,526.91	\$ 5,811.91	12%
January	\$ 51,388.51	\$ 52,063.46	\$ 54,422.25	\$ 2,358.79	5%
February	\$ 58,337.94	\$ 66,632.44	\$ 95,017.02	\$ 28,384.58	43%
March	\$ 111,947.32	\$ 127,975.20	\$ 71,946.84	\$ (56,028.36)	-44%
April	\$ 103,422.44	\$ 82,258.08	\$ 20,066.60	\$ (62,191.48)	-76%
May	\$ 140,130.14	\$ 166,129.65	\$ 123,839.27	\$ (42,290.38)	-25%
June	\$ 269,049.32	\$ 300,092.38	\$ 283,734.76	\$ (16,357.62)	-5%
July	\$ 215,933.34	\$ 209,374.07	\$ 253,488.28	\$ 44,114.21	21%
August	\$ 111,322.92	\$ 134,238.67			
September	\$ 70,419.47	\$ 90,051.57			
<b>Totals</b>	<b>\$ 1,304,397.92</b>	<b>\$ 1,401,731.72</b>	<b>\$ 1,101,769.22</b>	<b>\$ (75,672.26)</b>	<b>-5%</b>
<b>YOY %</b>	<b>\$ 53,702.10</b>	<b>\$ 97,333.80</b>	<b>\$ (299,962.50)</b>		
	<b>4.3%</b>	<b>7.5%</b>	<b>-21.4%</b>		



\* October and November 2018 due to Hurricane Michael statistically are outliers.  
 October and November 2019 compared with 2017-18 amounts are more representative,  
 thus, these months show increases of 10% and 9% respectively, or YTD increase of 31%.  
 \* Coronavirus-19 March 1 - May 18 2020

Month	2005-06	2006-07	2007-08	2008-09	2009-10	2010-11	2011-12
October	\$ 35,408.91	\$ 32,809.57	\$ 39,697.19	\$ 38,597.69	\$ 39,568.32	\$ 36,996.34	\$ 48,383.10
November	\$ 24,824.38	\$ 24,717.35	\$ 27,182.76	\$ 25,888.92	\$ 25,863.47	\$ 26,438.49	\$ 34,441.98
December	\$ 20,421.74	\$ 16,055.89	\$ 22,986.95	\$ 23,167.33	\$ 16,530.96	\$ 19,936.19	\$ 21,597.00
January	\$ 19,681.48	\$ 26,489.68	\$ 22,911.37	\$ 22,960.20	\$ 26,170.57	\$ 23,359.12	\$ 30,392.62
February	\$ 29,294.47	\$ 44,900.59	\$ 40,835.29	\$ 39,452.32	\$ 33,678.97	\$ 34,980.88	\$ 52,045.79
March	\$ 51,243.40	\$ 45,643.22	\$ 61,090.70	\$ 49,778.57	\$ 53,116.79	\$ 61,989.52	\$ 66,597.90
April	\$ 69,608.73	\$ 70,430.06	\$ 66,135.24	\$ 73,880.65	\$ 53,934.68	\$ 70,610.82	\$ 81,641.55
May	\$ 100,486.16	\$ 114,100.71	\$ 123,221.80	\$ 104,769.28	\$ 120,470.95	\$ 90,634.75	\$ 140,203.97
June	\$ 107,484.39	\$ 166,403.90	\$ 138,839.79	\$ 143,507.76	\$ 151,640.61	\$ 172,029.99	\$ 143,805.29
July	\$ 149,857.23	\$ 95,128.02	\$ 128,027.35	\$ 131,276.62	\$ 114,121.18	\$ 147,874.24	\$ 140,000.40
August	\$ 51,353.14	\$ 69,863.99	\$ 57,497.82	\$ 56,312.21	\$ 71,377.70	\$ 60,698.01	\$ 93,912.12
September	\$ 38,597.72	\$ 46,282.27	\$ 45,739.57	\$ 41,298.87	\$ 47,760.09	\$ 57,592.93	\$ 63,037.18
<b>Totals</b>	<b>\$ 698,261.75</b>	<b>\$ 752,825.25</b>	<b>\$ 774,165.83</b>	<b>\$ 750,890.42</b>	<b>\$ 754,234.29</b>	<b>\$ 803,141.28</b>	<b>\$ 916,058.90</b>
<b>YOY %</b>		<b>\$ 54,563.50</b>	<b>\$ 21,340.58</b>	<b>\$ (23,275.41)</b>	<b>\$ 3,343.87</b>	<b>\$ 48,906.99</b>	<b>\$ 112,917.62</b>
		<b>7.8%</b>	<b>2.8%</b>	<b>-3.0%</b>	<b>0.4%</b>	<b>6.5%</b>	<b>14.1%</b>

	<b>2012-13</b>	<b>2013-14</b>	<b>2014-15</b>	<b>2015-16</b>	<b>2016-17</b>	<b>2017-18</b>	<b>2018-19</b>
\$	53,543.22	\$ 57,651.88	\$ 58,875.87	\$ 75,084.59	\$ 95,107.96	\$ 85,823.35	38,416.89
\$	40,334.08	\$ 34,740.65	\$ 40,065.78	\$ 44,449.24	\$ 46,043.65	\$ 49,440.74	
\$	21,510.93	\$ 29,747.90	\$ 30,978.80	\$ 24,692.82	\$ 41,580.49	\$ 37,182.43	
\$	33,657.09	\$ 34,707.03	\$ 38,805.36	\$ 47,001.63	41,668.57	\$ 51,388.51	
\$	49,365.87	\$ 52,883.10	\$ 42,754.53	\$ 64,493.95	\$ 60,422.61	\$ 58,337.94	
\$	80,880.36	\$ 78,180.12	\$ 83,626.43	\$ 80,017.67	\$ 84,583.19	\$ 111,947.32	
\$	90,242.68	\$ 81,115.14	\$ 101,310.37	\$ 103,120.37	89,949.68	\$ 103,422.44	
\$	115,589.54	\$ 135,897.45	\$ 143,700.44	\$ 131,348.44	110,484.59	\$ 140,130.14	
\$	195,838.11	\$ 210,505.76	\$ 195,093.30	\$ 213,948.96	\$ 226,795.48	\$ 269,049.32	
\$	153,197.77	\$ 164,199.99	\$ 182,235.52	\$ 253,603.30	\$ 242,036.51	\$ 215,933.34	
\$	86,742.96	\$ 107,783.56	\$ 129,879.50	\$ 82,664.07	\$ 121,808.90	\$ 111,322.92	
\$	57,170.58	\$ 64,199.48	\$ 75,778.00	\$ 81,869.35	\$ 90,214.19	\$ 70,419.47	
\$	<b>978,073.19</b>	\$ <b>1,051,612.06</b>	\$ <b>1,123,103.90</b>	\$ <b>1,202,294.39</b>	\$ <b>1,250,695.82</b>	\$ <b>1,304,397.92</b>	
\$	<b>62,014.29</b>	\$ <b>73,538.87</b>	\$ <b>71,491.84</b>	\$ <b>79,190.49</b>	\$ <b>48,401.43</b>	\$ <b>53,702.10</b>	
	<b>6.8%</b>	<b>7.5%</b>	<b>6.8%</b>	<b>7.1%</b>	<b>4.0%</b>	<b>4.3%</b>	

	<b>Diff</b>	<b>YTD Change %</b>
\$	(47,406.46)	-55.2%
\$	(49,440.74)	-100.0%
\$	(37,182.43)	-100.0%
\$	(51,388.51)	-100.0%
\$	(58,337.94)	-100.0%
\$	(111,947.32)	-100.0%
\$	(103,422.44)	-100.0%
\$	(140,130.14)	-100.0%
\$	(269,049.32)	-100.0%
\$	(215,933.34)	-100.0%
\$	(111,322.92)	-100.0%
\$	(70,419.47)	
\$	<b>(1,304,397.92)</b>	-100.0%

Analysis check

	2018-19	2019-20	Increase/Decrease	% of Change
October	\$ 38,416.89	\$ 89,660.28	\$ 51,243.39	133%
November	\$ 87,784.31	\$ 57,067.01	\$ (30,717.30)	-35%
December	\$ 46,715.00	\$ 52,526.91	\$ 5,811.91	12%
January	\$ 52,063.46	\$ 54,422.25	\$ 2,358.79	5%
February	\$ 66,632.44	\$ 95,017.02	\$ 28,384.58	43%
Totals	\$ 291,612.10	\$ 348,693.47	\$ 57,081.37	20%